



# *JOY Newsletter*

March 2022

United Methodist Church  
of Whitefish Bay

## **The Lion and the Lamb**

As I sit here just days before we turn our calendars to the month of March, the weather outside is doing what Wisconsin weather does this time of year: it fluctuates wildly. Almost 30-degree swings from one day to the next. Snow melts and then freezes, creating sidewalk ice rinks. One of the phrases about March I heard every year growing up was: "In like a lion and out like a lamb." I am never surprised when March roars in like a lion. The question is how far away is the lamb? Although parts of this winter have been brutal, we have a promise that one day (hopefully soon) the snow will melt, the grass will grow, flowers will bloom, and golfers will golf.

The imagery of lion and lamb have a strong foundation in scripture. Jesus is spoken of as the "Lion of Judah, the root of Jesse" (Rev. 5:5) and as the Lamb of God: "Behold, the Lamb of God, who takes away the sin of the world!" (John 1:29)

As we enter into the season of Lent this March (Ash Wednesday is March 2<sup>nd</sup>), we need to focus on the Lamb. Thirty-one times in the New Testament Jesus is referred to as a lamb, the "Paschal Lamb." Each year at Passover, a perfect lamb without blemish would be sacrificed at the temple on behalf of all of the Jews. The crucifixion of Jesus was the sacrifice to end all sacrifices. We now have direct access to God. Lent is the period of forty days leading up to the Celebration of Easter (Easter is April 17th this year; I wonder what the temperature will be on that day?). Christians have used these forty days for self-reflection about the state of our souls and the need of a relationship with the Lamb.



So whether March thirty-first is seventy degrees or seven, the Lamb will be there. Let's make good use of these days. May March find us celebrating the spiritual disciplines that help keep us in relationship with our Savior.

Pastor Matt Hadley

# Worship

## All are welcome Friday, March 4, for Taizé Worship



Start your Lenten season off right with a meditative Taizé prayer service on **Friday, March 4, at 7:00 p.m.** Music, scripture, silence, candles, and icons will all be available for your private worship.

**Taizé Worship will occur the first Friday of every month at 7:00 p.m.**

Contact Sue Stanley for more information at [ssstanley@umcwfb.org](mailto:ssstanley@umcwfb.org) or 414-339-9212.

---

## Mask & WNL Update

As promised, we gather together as a staff each week to assess the status of local, state, and national COVID numbers. This week, the decision was made to go back to masks as optional in worship. We are still asking those who are unvaccinated to wear masks for their own well-being. In addition, all those working with our unvaccinated children will continue to wear masks.

**Our Wednesday Night Live meal and programming will relaunch on Ash Wednesday, March 2.** We will continue to monitor numbers weekly, as the spiritual and physical health are important to us.



Thank you for your understanding.  
Pastor Matt and staff

## WOW– Women Offering Worship

WOW Lenten Studies begin **Thursday, March 3.** Drawn to the Cross, the devotional for Lent from the writings of Henri Nouwen, will be the Lent study. Consider being part of this, either in person or via Zoom – the insights that come from our group discussions lend wonderful perspective. Contact Nell Nash at [nnash@umcwfb.org](mailto:nnash@umcwfb.org) for the Zoom link! Inspiring faith-lift, prayer and praise worship in the Sanctuary, livestream, and Facebook every Thursday morning at 9 a.m.

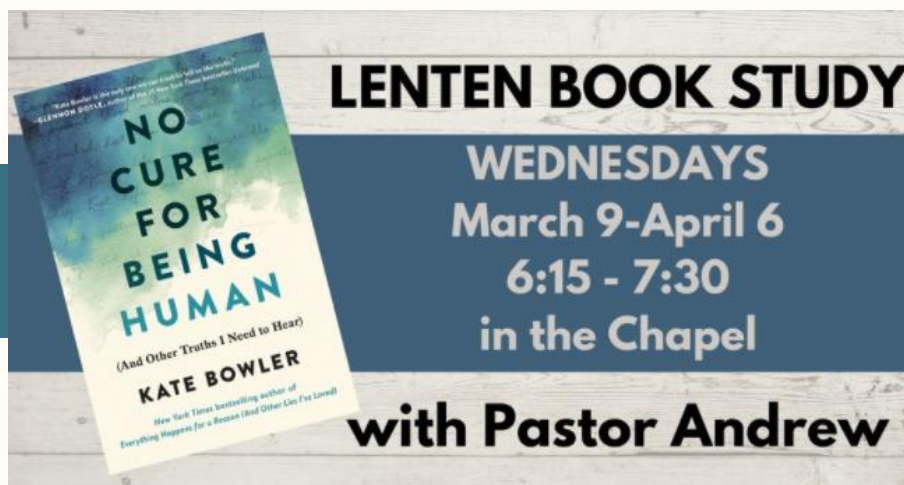
Women Offering Worship for all ages and stages – for women like YOU!

# Worship

## Ash Wednesday Worship Service

**March 2, at 7:00 p.m.**

**Join us in person or via livestream.**



For many of us during the pandemic, life shrunk to the size of the room we were in. We had to learn how to build a beautiful life inside new limitations. We found hope and courage and beauty by setting aside the promises of self-help gurus and social media influencers to make peace with our beautiful, terrible mortality. As we approach the season of Lent, we would like to offer a new opportunity for how we might do that together.

Kate Bowler has a new book called *No Cure for Being Human (and Other Truths I Need to Hear)* that asks the question, How do we move forward when there is no going back? It's a memoir for all of us who understand we are more limited than we may have realized. Those of us who are trapped by fragile bodies, commitments, dependents, geography, money, and circumstances.

We are offering a space on during Wednesday Night Live on **March 9 - April 6, from 6:15-7:30 p.m.** to process and discuss Kate's book with Pastor Andrew. The gathering will start with a brief time of checking-in and be followed by a gently facilitated conversation. All you need to do is buy the book from your favorite bookseller and let us know that you're coming.

[CLICK HERE](#)

to let us know you can join us, or contact Pastor Andrew ([ajones@umcwfb.org](mailto:ajones@umcwfb.org)). As Kate says, "There is no cure for being human, but we are all good medicine."



## Souper Bowl is a super success

Hearty thanks to our church family for your Souper Bowl support. Because of your generosity, 280 quarts of soup were sold, and 108 cans of soup will be donated to the food pantries at MacCanon Brown Homeless Sanctuary and United Methodist Children's Services. UMW looks forward to using the profits of the sale to support additional missions and ministries later this spring. God bless the soup teams and all who enjoyed their efforts!



**The following article appeared in the Luther Manor newsletter and describes the outstanding work done by Claudia Circle.**

Luther Manor's volunteer services and its residents received an incredible donation of 18 beautifully hand-quilted lap robes. Delivered by members of the Claudia Circle from United Methodist Church of Whitefish Bay, each quilt has the following stitched label inside: "Love

and Comfort to You, From: Claudia Circle of the United Methodist Church of Whitefish Bay." Luther Manor Terrace resident Cary Fellman (second from the left) is a part of the Claudia Circle. Thank you, ladies, for such kindness and your beautiful work!

## Reading Circle looks ahead

The Reading Circle is meeting **April 5** to discuss *News of the World* by Paulette Jiles. Whether that will be in person or on Zoom is still to be determined! *The Splendid and the Vile* by Erik Larson will be discussed May 3, and *The Vanishing Half* by Brit Bennett is set for June 7. **Meetings are always the first Tuesday of the month at 7:00 p.m.** Sally Jipson is looking for suggestions for the 2022-23 reading list. Contact her at [swjip@hotmail.com](mailto:swjip@hotmail.com) to suggest books and to get on the group's email list.

## Wanted: Your photos of church weddings

The Bride's Room has been remodeled for almost a year! We are looking to change the wedding pictures on the wall. There is very limited space, so we can only display photos from weddings that were performed at our church. In addition, we have more spaces for 5x7 pictures. If you would like to share your wedding photo, or one of your children's wedding photos, please email a digital copy of a 5x7 or an 8x10 image to Linda Mazumdar at [lmaz@sbcglobal.net](mailto:lmaz@sbcglobal.net). You may also have a 5x7 or 8x10 that you are willing to part with. Please leave that photo in the UMW mailbox in the office marked "Bride's Room."

**Deadline for the photos is April 1.**

**UMW May Tea  
Petals and Praise**

**Tuesday, May 10, 2022 at 11:30 a.m.**

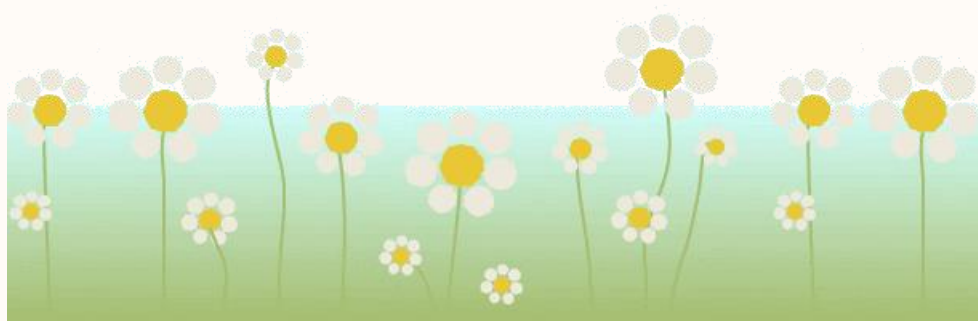
**In Fellowship Hall**

**\$8.00**

**The Petals and Praise program  
will present beautiful floral arrangements  
and scriptures that will provide joy to all.**

**One will delight in the variety of teas  
plus tea sandwiches (including gluten-free options),  
sweet breads, scones, and delicious desserts.**

**Sign up sheet available in April in the office  
or one can call the office at 414-964-2424.**



# Men's Ministry

**Breakfast cancelled:** Hopefully we can get together for a May breakfast, but Covid precautions will cancel the March 19 breakfast as well as sailing with John Krezosk. John is invited back for May.



## Habitat for Humanity:

Two dates for volunteers - 16 years of age and older:

- **Saturday, March 12:** Prepare for the new houses by building wall panels at the Habitat warehouse.
- **Friday, April 1:** House construction begins on site with framing.

LET DON LUBECK ([mdonlybeck@sbcglobal.net](mailto:mdonlybeck@sbcglobal.net))  
KNOW YOU CAN BE THERE.

**Habitat studs to decorate:** We have until the middle of March to decorate and sign the studs that will be used in the frames of the new houses this year.

Your messages on the studs are seen by the new owners as they work with us to build their homes and are then remembered by those new owners as they move in and build a life within those walls. Those words of love and caring are a permanent part of their home.

## STUDS TO BE DECORATED ARE AT CHURCH -

**\*\*SUNDAY AVAILABILITY UNTIL MARCH 13\*\***

DON LYBECK IS LOOKING FOR YOU TO HELP  
AND WILL EVEN BRING STUDS TO YOUR HOUSE.  
LET HIM KNOW YOU CAN HELP.



## Gray Guys will meet **Tuesday, March 29, 8:30 a.m. until noon.**



First, the group meets up for donuts. Then, they get to work with small jobs that make a big difference in helping to maintain our church building. All men of every ability are welcome to lend a hand with these projects!



# Partnership

## Let's Celebrate Diversity

When the Racial Diversity Team was looking for an opportunity to interact with a group of people to better get to know our neighbors to the west, who better to corroborate with than the inimitable Neil Bubke! Neil and Sharon Garrett set off on their mission by contacting Dr. Joy Gallmon, pastor of St. Mark AME Church, and Christlyn Stanley, principal of Keefe Elementary School, to explore a joint venture. The result will culminate with an outreach ministry project, a children's spring musical "It's Cool in the Furnace." Think Shadrach, Meshach, and Abednego. It will be performed at Keefe School and at our church, with all children being invited to perform at both locations on **Thursday, April 21** and **Sunday, April 24**.



One of our goals is to get to know these neighbors in a natural, mutually defined event. Interestingly, we are already finding so many striking similarities between our church and St. Mark, which was organized here in Milwaukee in 1869. Their theme "All are Welcome Here" is one we constantly pursue. Their services include Sunday morning physical and virtual services and Wednesday Bible studies. St. Mark provides outreach services, including a "Pop-Up Pantry" on the 2nd and 4th Sundays where they distribute free food, and they provide a number of resources for health information for their attendees. They recently sponsored a presentation on "Dementia Perspectives," led by Beverly Berry of the Alzheimer's Association and, on another occasion, free Covid testing. A Men's Ministry called Sons of Allen, Women's Missionary Union, and Hospitality Ministry are all opportunities for participation. Seven college scholarships are awarded through the church as well.

Keefe Elementary School serves grades K-4 through 8 at 1618 W. Keefe Avenue. The school offers a gifted and talented program and basketball on the sports side. One of their community partners is listed as St. Mark AME Church. Before and after school care is offered through the Community Learning Center's Boys and Girls Club. Neil conducted his first 90-minute rehearsal at Keefe on February 17 and sees opportunities for others to get involved through set building and costumes. Neil stated, "This outreach ministry project has the potential to be transformational for all of the students, for some of the teachers, for some of the parents and volunteers, and for me. There are still many unknowns. Nonetheless, I feel a sense of peace knowing that God wants this to happen." Let's ALL help make it happen!

# Outreach

## **Mission of the Month - March United Methodist Committee on Relief (UMCOR)**

Your donations in March will go to UMCOR. As the humanitarian relief and development arm of The United Methodist Church, the United Methodist Committee on Relief assists Methodists and churches to become involved globally in direct ministry to persons in need. Your gift ensures that UMCOR can respond quickly and in compassion to disaster and devastation. 100% of any gift goes toward that project. Mark your donations to UMCOR.

---

## **Books for Marvin Pratt School**

We are collecting books for the school to give to the students for their summer reading. Please deposit any new or gently-used K-4 thru 5th grade books in the box by the elevator in the Narthex. The students thank you as well as the teachers. Call Loretto at 414-550-2957 if you have any questions.



# Lydia's

**Lydia's Treasure**—Every purchase, every day, supports mission in at least one way. Fair Trade items, like kisii stone hearts, Divine Chocolate, and tagua necklaces, support artisans in other countries with safe working environments and fair prices for their wares. Thistle Farms lotions help women survivors of trafficking and abuse live and work in a community of other survivor women. Jeff Hanson notecards support multiple charities with their proceeds. And ALL proceeds from the sale of these, the fun finds, gently read books, puzzles, and toys from Lydia's Treasure will this fiscal year go to the Starfish Foundation (supporting mental health among veterans and others), Above The Clouds (bringing fine arts to inner city kids), and Peace Learning Center (teaching peaceful resolution skills to MKE area children). Check out our little mission gift shop and see how far your dollars can go! We are OPEN Tuesdays 10:00 a.m. - 3:00 p.m., along with Sunday mornings.

**Lydia's Treasure**  
A Mission Supporting Store



# Youth

Hey Friends,

In February, our youth and kids took celebration to the next level! We partied together for the Big Game and a kids' choir pizza event. Using balloons, we learned the discipline of play in worship.

Kids found a fun, new way to give in mission and support Habitat for Humanity. Both youth and children served in love by creating Valentine's Day cards for seniors. As we look to March, our focus will be on the season of Lent. Both youth and kids will learn to walk with Jesus in love and truth as we serve and grow together!



## Family Lent Kits

Starting Ash Wednesday, families with younger kids can learn about the season of Lent through a Story Garden kit. This includes activities for holy days and Sundays during the 40 days leading up to Easter. Contact Pastor Andrew if you would like a kit!

## Appalachia Service Project

Our next adventure with Appalachia Service Project will be from **July 16-24, 2022** and we need your help! Fundraising for our trip begins now!

We are selling chili (more details on next page), ASP stock, and looking for silent auction items for our new telethon!!

*Continued on next page.*

## ASP Trip Fundraisers



Stocks Sales

February - June

An investment in mission.

Sold by youth in the Narthex and on your own.

Chili & Dessert Sales

February 20 - March 9

Youth will put together dessert kits on March 12.

Chili pickup March 13.



ASP Trip Telethon

April 7 & 10

A fundraising broadcast you'll never forget!

Pledges and silent auction items.

# Youth

ASP is open to all current 8th graders through current high school seniors. We also need adult and youth leaders to accompany us on the trip. This is a great opportunity for adults and kids to have an experience they can share for a lifetime.

Please let Lori Aeschbacher ([loriaeschbacher@sbcglobal.net](mailto:loriaeschbacher@sbcglobal.net)) or Pastor Andrew know if you have interest in going or have questions about the trip.

## **Summer Plans**

- Kids Grades 2-5: Lake Lucerne Camp: **June 19-22** (Registration starting soon!!)
- Youth Quest Camp: **June 26-July 1**
- Appalachia Service Project (High School Only): **July 16-24**
- Vacation Bible School: **August 1-5**

[If you have interest, would like information, or want to volunteer for any of these summer events, fill out this SURVEY!](#)

If you have any questions or would like to get involved in serving or volunteering, please contact me at [ajones@umcwf.org](mailto:ajones@umcwf.org).

With Hope,

*Pastor Andrew*

---

## **ASP Fundraiser**

Without the Rummage Sale, the ASP Chili Sale is being held a little differently this year. We are selling quarts of chili for you to take home and enjoy. We have 4 different types of chili to choose from: Mild, Spicy, Meatless, and White Chicken. Each quart of delicious chili is \$10.



We are also selling Cookie Jars. Cookie Jars contain the dry ingredients necessary for making around 2 dozen cookies. Some additional ingredients (like butter, eggs) will need to be added prior to baking. We have 3 different types of Cookie Jars: Chocolate Chip, Oatmeal Raisin, and Snickerdoodle. Cookie Jars are also \$10.

**We will be taking orders in the Narthex through March 6.**

Or, send your order details to [loriaeschbacher@sbcglobal.net](mailto:loriaeschbacher@sbcglobal.net).

Orders can be picked up at church on

**Sunday, March 13, from 10 a.m. until noon.**

All proceeds will go to support our week-long Youth Mission Trip to Appalachia Service Project this summer. Thank you for your support.

# Notes from the Board

The ALB has welcomed several new members since January. Our most recent new member is Don Behrens. Don has served as chair of the Staff Parish Relations Team for the last several months and he will continue that role on the board. Don has been a member of the church for over 30 years and is currently a member of the Chancel Choir and the Handbell Choir. He has previously chaired the SPRT and Church Council and served on Church & Society.

Here is the current list of ALB members and their role:

Kathy Schluter	- Chair and Finance
Mike Stoehr	- Vice-chair
Craig Walker	- Trustees chair
Don Behrens	- Staff Parish Relations Team chair
John Frunceck	- Technology Team chair
Brady Henderson	- Generosity Team
Lori Aeschbacher	- Youth and Missions representative
Nancy Anderson	- Women's Ministry representative

We are excited about the energy and ideas the new members will bring to ALB. We also want to remind you that the ALB represents the congregation and you can reach out to any of us with questions, comments, or suggestions or attend our monthly meetings.

## **New District Superintendent**

On July 1, District Superintendent Rev. Forrest Wells will retire and Rev. Dr. Ebenezer Insor will replace him. Rev. Insor was the last pastor to serve the Emanuel Church on West Silver Spring Drive.

## **COVID Policy**

With COVID cases declining, we lifted the mask mandate in late February and will restart WNL on March 2. Hopefully, this is the start of our church getting back to normal!

## **Staff Parish Relations**

The Director of Membership and Engagement position was posted four weeks ago, but we are still looking for qualified candidates. If you know of someone who might be interested, please let Don Behrens or Pastor Matt know.

We are also considering options for a position dedicated to growing our website, social media, and other external communications.

## **Technology**

We are working to integrate the groups in our administrative software platform (Shelby) with Constant Contact. Although our church has over 2,000 groups on Shelby, only one list in Constant Contact can be synced with Shelby. Our present integration was configured to sync a "Families with elementary students" group, as well as the "Worship" group, in Shelby, with the "Families with children" list in Constant Contact. That is why so many people who did not have children received the families with children emails. This has been corrected. However, we will be forced to add additional groups to Constant Contact manually.

*Continued on next page.*



# ALB Notes

## **Trustees**

Trustees are reviewing three initial designs for the renovation of the Narthex. The two preferred designs would add conversation spaces, a coffee shop, and new carpeting and painting to the Narthex, while one is limited to new carpeting and painting. Other ideas are also being considered. Drawings of the first two designs will be available soon for the congregation to view. The cost of the first two designs is expected to be \$150,000-200,000. Some of the funding may come from the remaining Capital Campaign funds which were intended to fund new carpeting in the Narthex.

A team is selecting new flooring for the Youth Room and paint for the walls. The cost will be covered by the \$8,000 insurance payment received two years ago to repair water damage from the leaky roof (now replaced) and the Capital Fund.

This summer work will begin at Pastor Andrew's parsonage at 816 E. Glen Avenue to do tuck pointing of the chimney and other brick and repair the back yard patio and the side porch. (Sadly, Pastor Andrew's suggestion to add a hot tub and sauna was nixed!)

## **Rummage Sale Fundraisers**

With the Rummage Sale cancelled again this year due to COVID, we are considering whether and how to hold the Rummage Sale in the future. The Rummage Sale has many benefits: it raises about \$15,000 for missions, fosters fellowship, and is a community outreach. However, it needs new leadership with the retirement of Dick and Loretto Steinmetz and a significant commitment by many volunteers. A small group is being formed to consider alternatives, e.g., a more limited sale, a sale every other year, or a different outreach, and bring a recommendation back to ALB.

## **Strategic Plan Update**

The ALB is tasked with reviewing progress on the Strategic Plan. Initiatives were established in June, but progress has been slowed on some by the COVID pandemic and the loss of staff.

## **Invitation: Upgrade social media**

We have changed our website to a platform with more functionality, but are looking for help to create, monitor, and manage design and content

## **Ministry Engagement: Increase congregational connections**

This initiative will be assigned to our Director of Membership and Engagement when the position is filled.

## **Faith Formation: Increase stability and vitality of Sunday School and Youth Programs**

Pastor Andrew, with support from Neil, is doing a great job with our children and youth ministry.

## **Faith Formation: Create Hybrid Classroom**

We have made the Narthex renovation a higher priority and are in the planning stage.

## **Other Initiatives:**

### **Faith Formation: Establish Generosity Team and develop Generosity Plan**

We are in the process of forming a team which will include ALB member Brady Henderson.

### **Diversity and Inclusion: Create partnership with one minority church**

We are partnering with St. Mark AME Church and Keefe Avenue School on a musical this

# ALB Notes

spring. We have built a robust laity-led social justice ministry and have joined MICAH (Milwaukee Inner City Churches Aligned for Hope).

## **Mission: Increase congregational connections to mission opportunities**

The Missions Team is publicizing mission opportunities, our food donations are still going strong, and we had a successful Pumpkin Sale, Tree of Love, and Christmas with a Conscience last fall and winter. Unfortunately, hands-on participation has been limited due to COVID.

## **Fellowship: Increase fellowship groups**

This initiative will also be assigned to our Director of Membership and Engagement when the position is filled

## **BSA Troop 400 Update**

We are still trying to get the Facility Use Agreement with Troop 400 signed. The agreement, which was drafted by the a law firm representing the WI Conference, was referred by Troop 400 to the local BSA Council CEO and reviewed by the Council attorney. The Council attorney has raised several issues with the agreement that will require further discussion and possible revisions.

The WI Conference is also developing an alternative to a charter called an Association Agreement that some churches may choose to use.

UMCWFB has emphasized to the Council that it does not have and never has had a charter with Troop 400.

## **Finances**

### **FY 2021-2022 Budget**

We had a typically weak January, with \$39,944 in pledge and \$5,745 in non-pledge income. The deficit for the month of January of \$23,775 reduced our surplus for the year to \$56,685. This is about \$7,000 over last year's YTD surplus. Our surplus is driven primarily by lower expenses due to unfilled staff positions and below-budget Trustee expenses.

### **Capital Account, Future Fund, and Properties Capital Fund**

On January 31, our Capital Account stood at \$68,352, due to the addition of a \$4,171 interest distribution from the Foundations and Memorials Fund.

The Future Fund remained the same at \$97,435.

The balance in the Properties Capital Fund also remained the same at \$213,507.

## **Pledge Drive**

Stewardship Sunday will be **June 5**. The Stewardship sermon series will focus on Living, Loving, and Giving In His Name.

**The next meeting of the ALB will be via Zoom on Tuesday, March 15, at 6:30 p.m.**



## *Our Birthdays for March*

Will	Bublitz	03/01	Clare	Aeschbacher	03/20
Stephanie	Kliber	03/01	Theodore	Balmer	03/20
Beth	Stafford	03/01	Suzan	Daugherty	03/20
Amanda	Speed	03/01	Karen Helms	Ward	03/20
Raylene	Greenlee	03/02	Kristin S.	Seidler	03/20
Jennifer	Sanders	03/03	Bonnie	Barr	03/21
Russell	LaFrombois	03/04	Dale	Snider	03/21
John	Widdifield	03/04	Samuel	Fruncek	03/21
Jenevieve Leigh Yuhang	Patrick	03/04	Judith Ann	Baltzley	03/21
Barbara	Abraham	03/05	Jenny	Chou	03/23
Randy	Nash	03/05	Kay	Nye	03/23
Katherine	Plaster	03/05	Richard	Lundell	03/23
Mary Beth	Feuling	03/05	Sandra	Workman	03/24
Lynette	Mortonson	03/05	Angela	Wendling	03/24
Virginia	Johnson	03/06	Allswell	Buor	03/24
Robert	Loots	03/06	Jennifer	Breese	03/26
Natassja	Sook	03/06	Patricia	Ford	03/26
Nancy	Schacht	03/07	Thomas	Weber	03/26
Judy	Perkins	03/09	Claire	Wunderlich	03/26
Ethan	Zentner	03/09	Floreon	Woelfel	03/26
Brooke Evelyn	Speed	03/09	Carol	Christensen	03/26
Elizabeth	Harrison	03/09	Gail	Koenke	03/27
Del	Szewczuga	03/10	Andrea	Hatcher	03/27
Rena	Szewczuga	03/10	Virginia	Wagner	03/28
Michael	Perry	03/11	Drew	Nerbun	03/28
Violet	Jefferson	03/11	Marcia	Olen	03/29
Dorothy	Case	03/12	Scott	Kurtz	03/29
Kelly	Wilcox	03/13	Nelda	Mngoja	03/29
Jacob	Patrick	03/13	Violet	Peterson	03/29
Kate	Strelow	03/13	Brandt	Anderson	03/30
Katie	Daniels	03/15	John	Waeltz	03/30
Karen	Seward	03/15	Eric	Thompson	03/30
Jack	Middleton	03/16	Charles	Abram	03/30
Michel Mpoyo	Mwanza	03/16	Darlene	Vranek	03/31
Nancy	Trimble	03/17	Andrea	Seidler	03/31
Kathleen	Weber	03/18			